

**DOOR LOCK:**

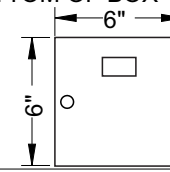
- 5 PIN CYLINDER CAM TYPE WITH 2 KEYS.
- EXTRA KEYS AVAILABLE. 1000 KEY CHANGES TO AVOID DUPLICATION

**DOOR IDENTIFICATION:**

- DOORS HAVE WINDOWS WITH NUMBERS, SOLID WITH ENGRAVED PLASTIC TAB OR ENGRAVING ON DOOR AND CARD HOLDER IN EACH BOX
- NUMBER PLATES SIZE: 2-1/2" X 1-1/8"
- WINDOW SIZE: 1-9/16" x 7/8"

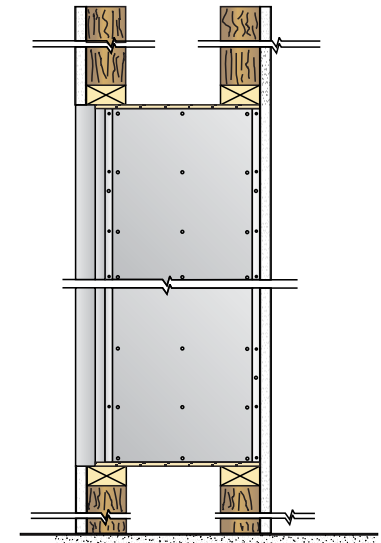
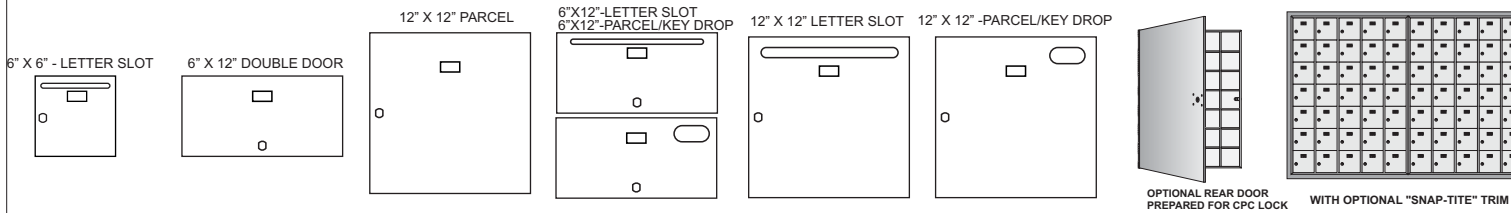
**SPECIFICATIONS:**

- 66" (1676 mm) MAX. FLOOR TO TOP OF BOX
- 18" (457 mm) MIN. FLOOR TO BOTTOM OF BOX
- 15-1/2" (394 mm) WALL DEPTH

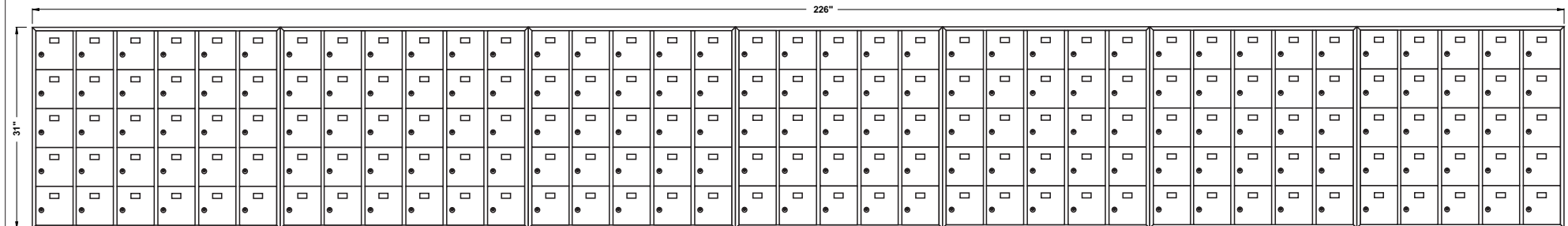


**6500-A185**

ROUGH WALL OPENING SHOWN ON DRAWING WITH 15-1/2" DEPTH



**SIDE VIEW**



**MODEL 6500 REAR LOADING HORIZONTAL MAILBOXES**

2 MODULES: 5 HIGH x 6 LARGE + 5 MODULES: 5 HIGH x 5 LARGE  
 185 \_\_\_\_\_ BOXES: 6" HIGH x 6" WIDE x 15" DEEP  
 DOORS OF 1/8" THICK EXTRUDED ALUMINUM  
 NATURAL BRUSHED FINISH  
 CABINET OF 24 GAUGE GALVANIZED STEEL

DATE: \_\_\_\_\_

CLIENT: \_\_\_\_\_

ATTN: \_\_\_\_\_

PROJECT: \_\_\_\_\_

APPROVED BY: \_\_\_\_\_

**Mail Boxes**  
 595 St-Rémi Street  
 Montreal, Quebec  
 CANADA - H4C 3G6

Tel: (514) 934-0385  
 Fax: (514) 934-1732

E-Mail: [info@riopel.net](mailto:info@riopel.net)