

- DOOR LOCK:**
- 5 PIN CYLINDER CAM TYPE WITH 3 KEYS.
  - EXTRA KEYS AVAILABLE. 1000 KEY CHANGES TO
  - AVOID DUPLICATION.

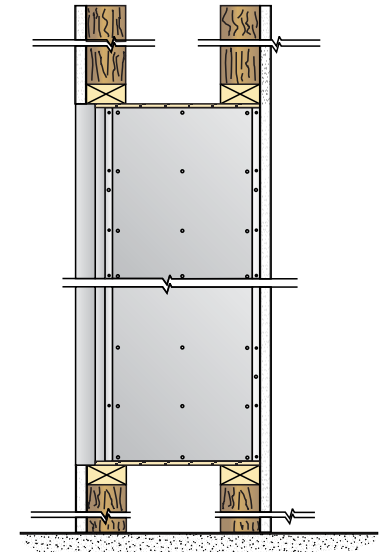
- DOOR IDENTIFICATION:**
- DOORS HAVE WINDOWS WITH NUMBERS, SOLID WITH ENGRAVED PLASTIC TAB OR ENGRAVING ON DOOR AND CARD HOLDER IN EACH BOX
  - NUMBER PLATES SIZE: 1-7/16" x 3/4"

- PARCEL AND DOUBLE BOXES:**
- PARCEL BOXES WOULD REPLACE 4 STANDARD BOXES. DOUBLE BOXES WOULD REPLACE 2 STANDARD BOXES. OVER ALL DIMENSIONS REMAIN THE SAME

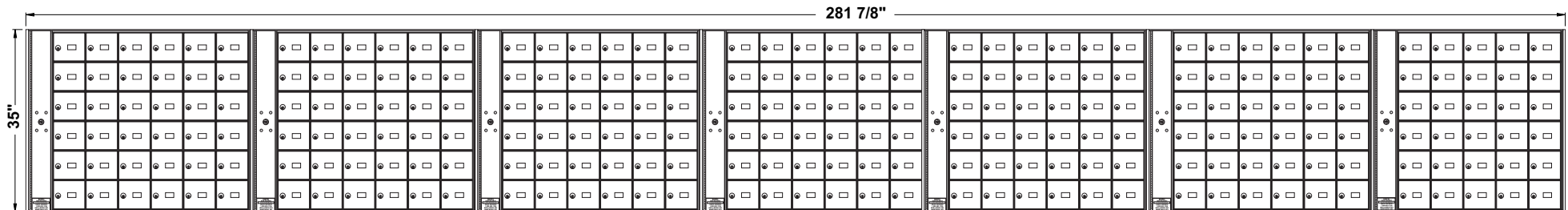
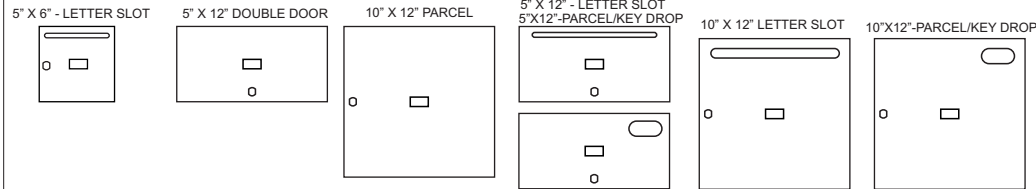


**5000-B246**

ROUGH WALL OPENING SHOWN ON DRAWING WITH 16-1/4" DEPTH



**SIDE VIEW:**



**MODEL 5000 FRONT LOADING HORIZONTAL MAILBOXES**

6 MODULES: 6 HIGH x 6 WIDE + 1 MODULE: 6 HIGH x 5 WIDE  
 246 \_\_\_\_\_ "B" BOXES: 5 3/8" HIGH x 5 3/8" WIDE x 15" DEEP  
 \_\_\_\_\_ "C" BOXES: 5 3/8" HIGH x 5 3/8" WIDE x 15" DEEP  
 \_\_\_\_\_ "D" BOXES: 10 7/8" HIGH x 10 7/8" WIDE x 15" DEEP

DOORS OF 1/8" THICK EXTRUDED ALUMINUM  
 CLEAR ANODIZED FINISH  
 CABINET OF 24 GAUGE GALVANIZED STEEL

**UNEQUALLED EXPERTISE IN MAILBOXES + POSTAL SPECIALTIES**

CLIENT:

ATTN:

PROJECT:

APPROVED BY:



**Mail Boxes**  
 595 St-Rémi Street  
 Montreal, Quebec  
 CANADA - H4C 3G6

Tel: (514) 934-0385  
 Fax: (514) 934-1732

E-Mail: [info@riopel.net](mailto:info@riopel.net)

DWG No.

BY: