

DOOR LOCK:

- 5 PIN CYLINDER CAM TYPE WITH 2 KEYS.
- EXTRA KEYS AVAILABLE. 1000 KEY CHANGES TO
- AVOID DUPLICATION.

DOOR IDENTIFICATION:

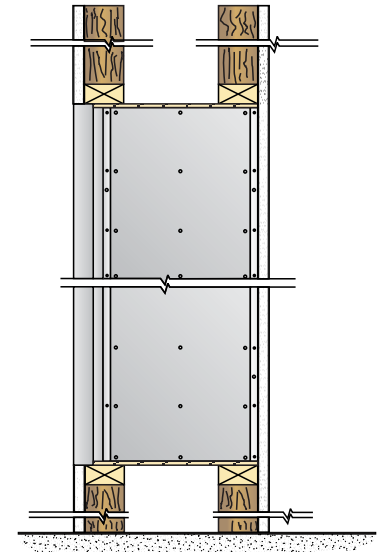
- DOORS HAVE WINDOWS WITH NUMBERS, SOLID WITH ENGRAVED PLASTIC TAB OR ENGRAVING ON DOOR AND CAR HOLDER IN EACH BOX
- NUMBER PLATES SIZE: 1-7/16" x 3/4"

PARCEL AND DOUBLE BOXES:

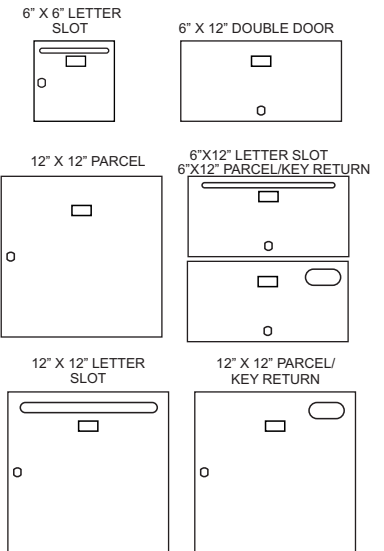
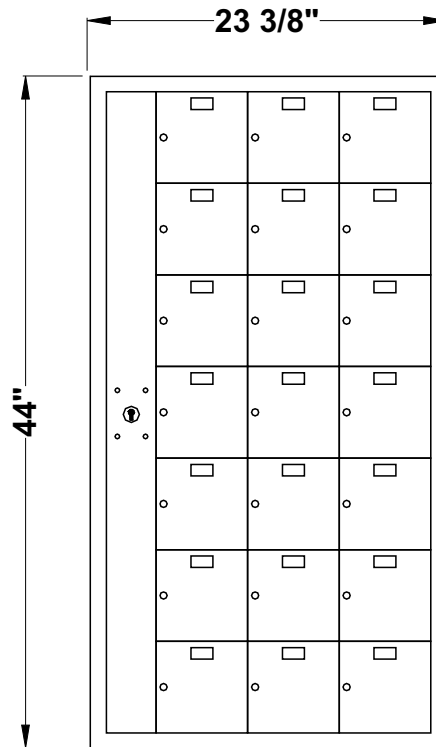
- PARCEL BOXES WOULD REPLACE 4 STANDARD BOXES. DOUBLE BOXES WOULD REPLACE 2 STANDARD BOXES. OVER ALL DIMENSIONS REMAIN THE SAME

6000-C21

ROUGH WALL OPENING SHOWN ON DRAWING WITH 16-1/4" DEPTH



SIDE VIEW:



MODEL 6000 FRONT LOADING HORIZONTAL MAILBOXES

- 1 MODULE: 7 HIGH x 3 WIDE
- 21 _____ "B" BOXES: 6" HIGH x 6" WIDE x 15" DEEP
- _____ "C" BOXES: 6" HIGH x 12" WIDE x 15" DEEP
- _____ "D" BOXES: 12" HIGH x 12" WIDE x 15" DEEP
- DOORS OF 1/8" THICK EXTRUDED ALUMINUM
- NATURAL BRUSHED FINISH
- CABINET OF 24 GAUGE GALVANIZED STEEL

DATE: _____

CLIENT: _____

ATTN: _____

PROJECT: _____

APPROVED BY: _____

Mail Boxes
 595 St-Rémi Street
 Montreal, Quebec
 CANADA - H4C 3G6

Tel: (514) 934-0385
 Fax: (514) 934-1732

E-Mail: info@riopel.net

DWG No. _____ BY: _____