

DOOR LOCK:

- 5 PIN CYLINDER CAM TYPE WITH 2 KEYS.
- EXTRA KEYS AVAILABLE. 1000 KEY CHANGES TO
- AVOID DUPLICATION.

DOOR IDENTIFICATION:

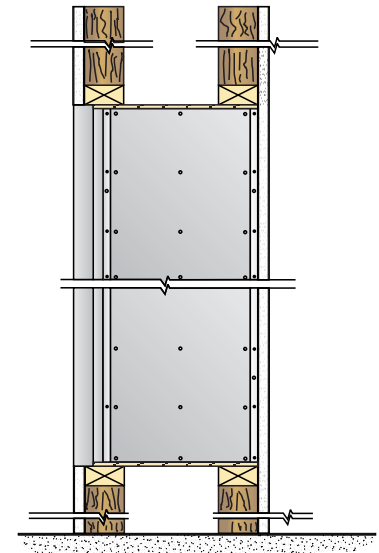
- DOORS HAVE WINDOWS WITH NUMBERS, SOLID WITH ENGRAVED PLASTIC TAB OR ENGRAVING ON DOOR AND CAR HOLDER IN EACH BOX
- NUMBER PLATES SIZE: 1-7/16" x 3/4"

PARCEL AND DOUBLE BOXES:

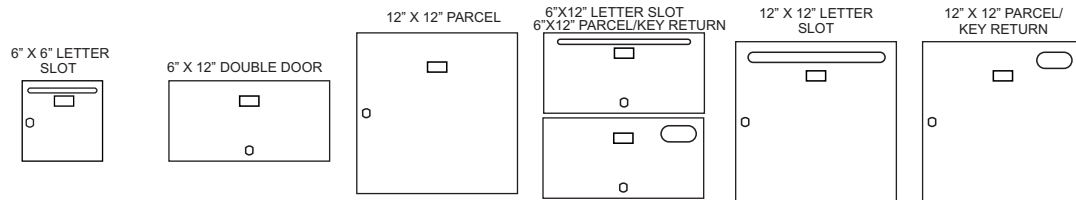
- PARCEL BOXES WOULD REPLACE 4 STANDARD BOXES. DOUBLE BOXES WOULD REPLACE 2 STANDARD BOXES. OVER ALL DIMENSIONS REMAIN THE SAME

6000-B192

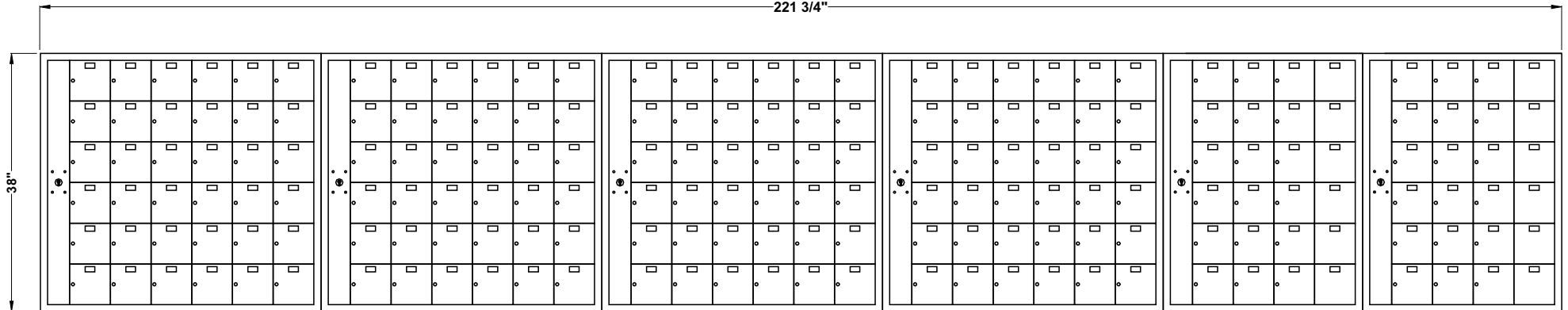
ROUGH WALL OPENING SHOWN ON DRAWING WITH 16-1/4" DEPTH



SIDE VIEW:



221 3/4"



MODEL 6000 FRONT LOADING HORIZONTAL MAILBOXES

4 MODULE: 6 HIGH x 6 WIDE + 2 MODULES: 6 HIGH x 4 WIDE

192 _____ "B" BOXES: 6" HIGH x 6" WIDE x 15" DEEP

_____ "C" BOXES: 6" HIGH x 12" WIDE x 15" DEEP

_____ "D" BOXES: 12" HIGH x 12" WIDE x 15" DEEP

DOORS OF 1/8" THICK EXTRUDED ALUMINUM

NATURAL BRUSHED FINISH

CABINET OF 24 GAUGE GALVANIZED STEEL

DATE:

CLIENT:

ATTN:

PROJECT:

APPROVED BY:



Mail Boxes
595 St-Rémi Street
Montreal, Quebec
CANADA - H4C 3G6

Tel: (514) 934-0385
Fax: (514) 934-1732

E-Mail: info@riopel.net