

**DOOR LOCK:**

- 5 PIN CYLINDER CAM TYPE WITH 2 KEYS.
- EXTRA KEYS AVAILABLE. 1000 KEY CHANGES TO
- AVOID DUPLICATION.

**DOOR IDENTIFICATION:**

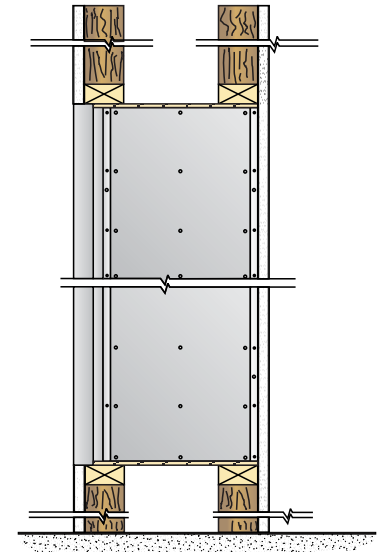
- DOORS HAVE WINDOWS WITH NUMBERS, SOLID WITH ENGRAVED PLASTIC TAB OR ENGRAVING ON DOOR AND CAR HOLDER IN EACH BOX
- NUMBER PLATES SIZE: 1-7/16" x 3/4"

**PARCEL AND DOUBLE BOXES:**

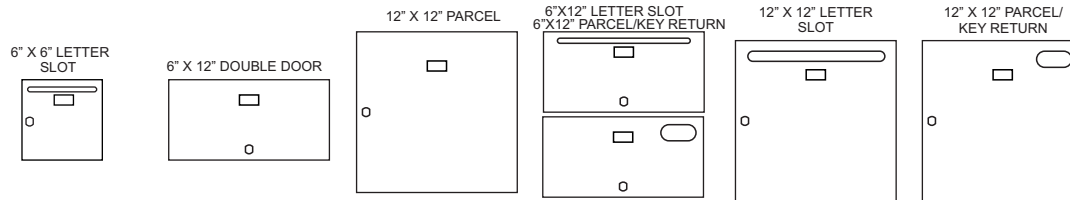
- PARCEL BOXES WOULD REPLACE 4 STANDARD BOXES. DOUBLE BOXES WOULD REPLACE 2 STANDARD BOXES. OVER ALL DIMENSIONS REMAIN THE SAME

**6000-A140**

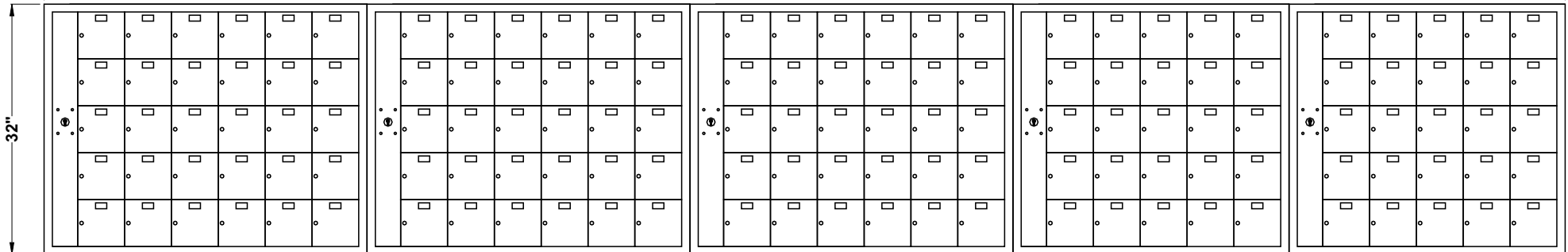
ROUGH WALL OPENING SHOWN ON DRAWING WITH 16-1/4" DEPTH



**SIDE VIEW:**



192 7/8"



**MODEL 6000 FRONT LOADING HORIZONTAL MAILBOXES**

3 MODULES: 5 HIGH x 6 WIDE + 2 MODULES: 5 HIGH x 5 WIDE

140 \_\_\_\_\_ "B" BOXES: 6" HIGH x 6" WIDE x 15" DEEP

\_\_\_\_\_ "C" BOXES: 6" HIGH x 12" WIDE x 15" DEEP

\_\_\_\_\_ "D" BOXES: 12" HIGH x 12" WIDE x 15" DEEP

DOORS OF 1/8" THICK EXTRUDED ALUMINUM

NATURAL BRUSHED FINISH

CABINET OF 24 GAUGE GALVANIZED STEEL

DATE:

CLIENT:

ATTN:

PROJECT:

APPROVED BY:



*Mail Boxes*  
595 St-Rémi Street  
Montreal, Quebec  
CANADA - H4C 3G6

Tel: (514) 934-0385  
Fax: (514) 934-1732

E-Mail: [info@riopel.net](mailto:info@riopel.net)

**UNEQUALLED EXPERTISE IN MAILBOXES + POSTAL SPECIALTIES**

DWG No.

BY: