

DOOR LOCK:

- 5 PIN CYLINDER CAM TYPE WITH 2 KEYS.
- EXTRA KEYS AVAILABLE. 1000 KEY CHANGES TO
- AVOID DUPLICATION.

DOOR IDENTIFICATION:

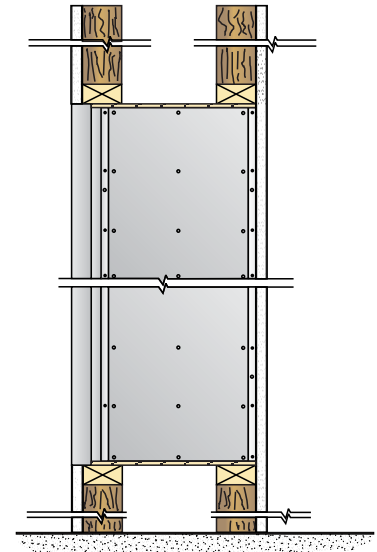
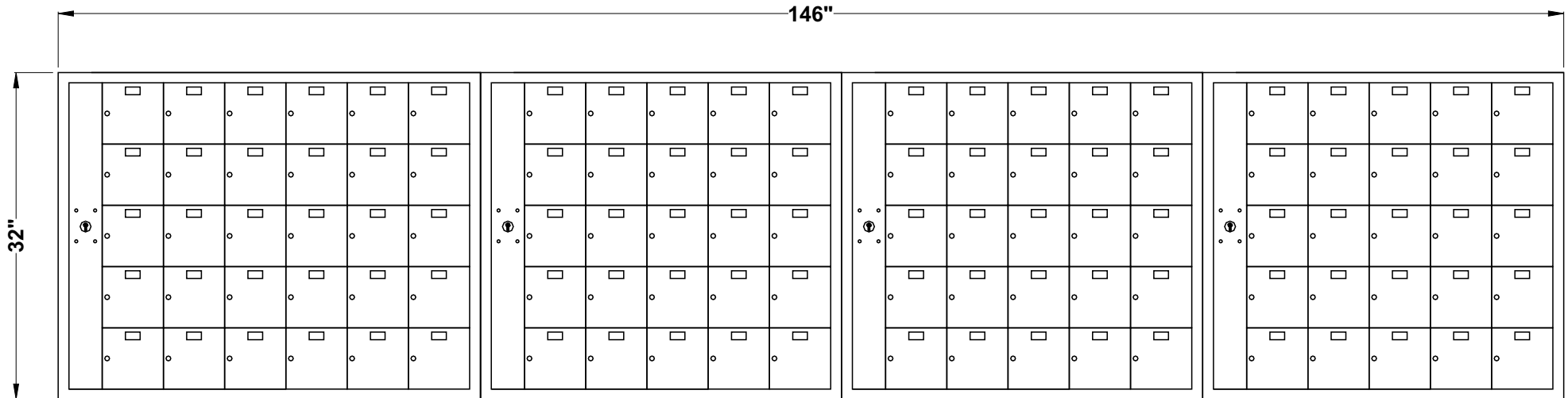
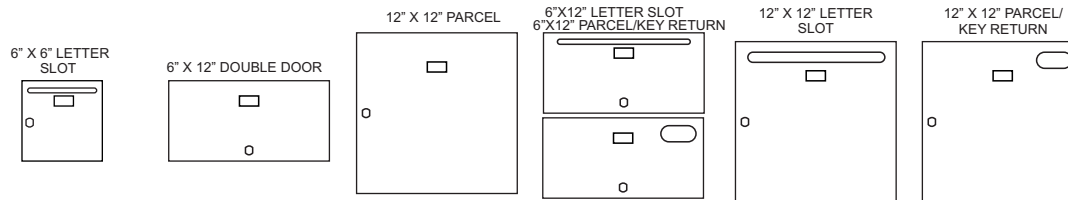
- DOORS HAVE WINDOWS WITH NUMBERS, SOLID WITH ENGRAVED PLASTIC TAB OR ENGRAVING ON DOOR AND CAR HOLDER IN EACH BOX
- NUMBER PLATES SIZE: 1-7/16" x 3/4"

PARCEL AND DOUBLE BOXES:

- PARCEL BOXES WOULD REPLACE 4 STANDARD BOXES. DOUBLE BOXES WOULD REPLACE 2 STANDARD BOXES. OVER ALL DIMENSIONS REMAIN THE SAME

6000-A105

ROUGH WALL OPENING SHOWN ON DRAWING WITH 16-1/4" DEPTH

**SIDE VIEW:****MODEL 6000 FRONT LOADING HORIZONTAL MAILBOXES**

1 MODULE: 5 HIGH x 6 WIDE +3 MODULES: 5 HIGH x 5 WIDE

105 _____ "B" BOXES: 6" HIGH x 6" WIDE x 15" DEEP

_____ "C" BOXES: 6" HIGH x 12" WIDE x 15" DEEP

_____ "D" BOXES: 12" HIGH x 12" WIDE x 15" DEEP

DOORS OF 1/8" THICK EXTRUDED ALUMINUM

NATURAL BRUSHED FINISH

CABINET OF 24 GAUGE GALVANIZED STEEL

DATE:

CLIENT:

ATTN:

PROJECT:

APPROVED BY:



Mail Boxes
 595 St-Rémi Street
 Montreal, Quebec
 CANADA - H4C 3G6

*Tel: (514) 934-0385
 Fax: (514) 934-1732*

E-Mail: info@riopel.net

UNEQUALLED EXPERTISE IN MAILBOXES + POSTAL SPECIALTIES

DWG No.

BY: