

DOOR LOCK:

- 5 PIN CYLINDER CAM TYPE WITH 2 KEYS.
- EXTRA KEYS AVAILABLE. 1000 KEY CHANGES TO AVOID DUPLICATION

DOOR IDENTIFICATION:

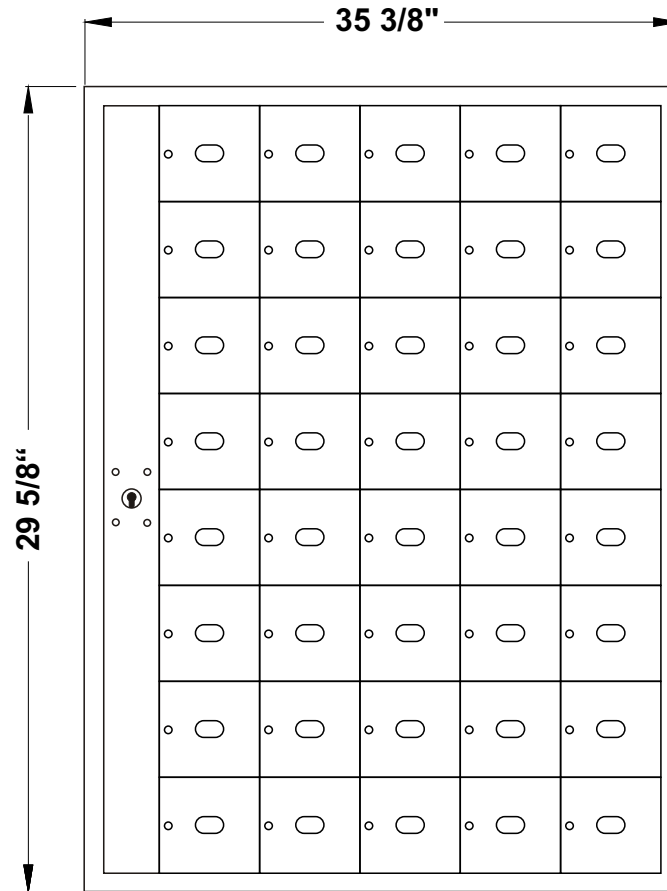
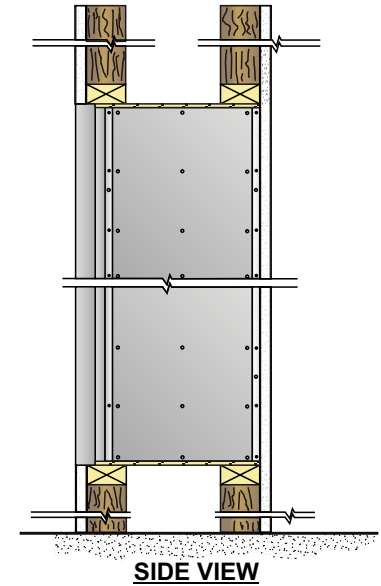
- DOORS HAVE WINDOWS WITH NUMBERS, SOLID WITH ENGRAVED PLASTIC TAB OR ENGRAVING ON DOOR AND CARD HOLDER IN EACH BOX
- NUMBER PLATES SIZE: 2-1/2" X 1-1/8"
- WINDOW SIZE: 1-9/16" x 7/8"

SPECIFICATIONS:

- 66" (1676 mm) MAX. FLOOR TO TOP OF BOX
- 18" (457 mm) MIN. FLOOR TO BOTTOM OF BOX
- 16 1/4" (413 mm) WALL DEPTH

4000-D40

ROUGH WALL OPENING SHOWN ON DRAWING WITH 16-1/4" DEPTH



MODEL 4000 FRONT LOADING HORIZONTAL MAILBOXES

1 MODULE: 8 HIGH x 5 LARGE

40 _____ BOXES: 5-1/2" HIGH x 6" WIDE x 15" DEEP

DOORS OF 1/8" THICK EXTRUDED ALUMINUM

NATURAL BRUSHED FINISH

CABINET OF 24 GAUGE GALVANIZED STEEL

DATE:

CLIENT:

ATTN:

PROJECT:

APPROVED BY:



Mail Boxes
 595 St-Rémi Street
 Montreal, Quebec
 CANADA - H4C 3G6

Tel: (514) 934-0385
Fax: (514) 934-1732

E-Mail: info@riopel.net

UNEQUALLED EXPERTISE IN MAILBOXES + POSTAL SPECIALTIES

DWG No.

BY: