

**DOOR LOCK:**

- 5 PIN CYLINDER CAM TYPE WITH 2 KEYS.
- EXTRA KEYS AVAILABLE. 1000 KEY CHANGES TO AVOID DUPLICATION

**DOOR IDENTIFICATION:**

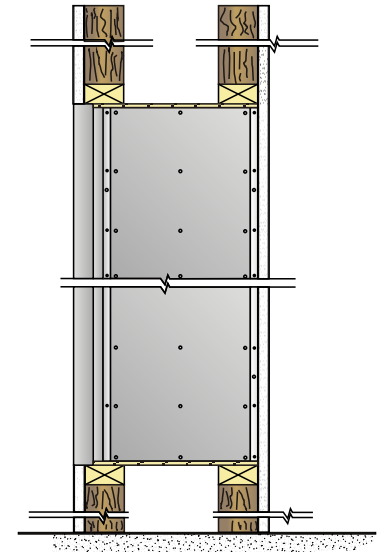
- DOORS HAVE WINDOWS WITH NUMBERS, SOLID WITH ENGRAVED PLASTIC TAB OR ENGRAVING ON DOOR AND CARD HOLDER IN EACH BOX
- NUMBER PLATES SIZE: 2-1/2" X 1-1/8"
- WINDOW SIZE: 1-9/16" x 7/8"

**SPECIFICATIONS:**

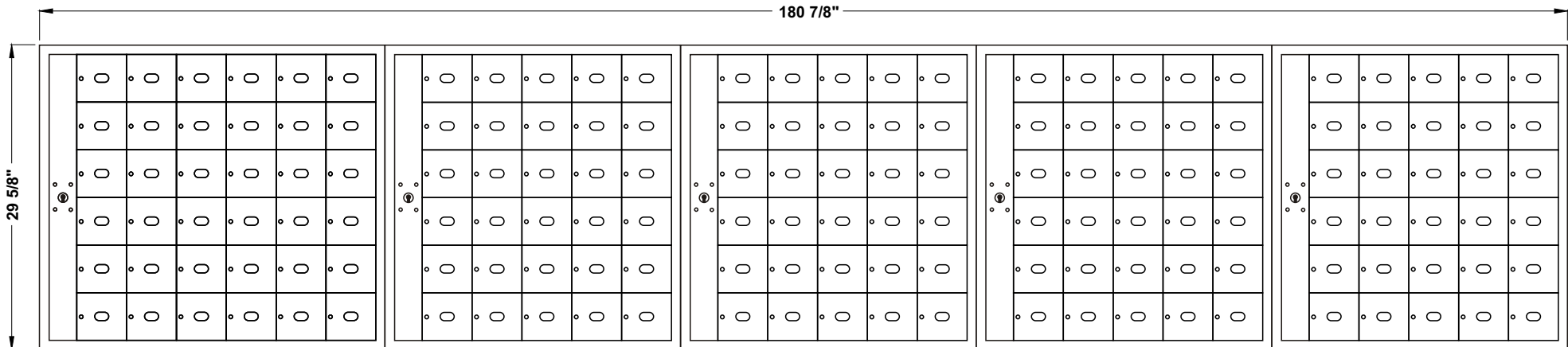
- 66" (1676 mm) MAX. FLOOR TO TOP OF BOX
- 18" (457 mm) MIN. FLOOR TO BOTTOM OF BOX
- 16 1/4" (413 mm) WALL DEPTH

**4000-B156**

ROUGH WALL OPENING SHOWN ON DRAWING WITH 16-1/4" DEPTH



**SIDE VIEW**



**MODEL 4000 FRONT LOADING HORIZONTAL MAILBOXES**

1 MODULE: 6 HIGH x 6 WIDE + 4 MODULES: 6 HIGH x 5 WIDE

156 \_\_\_\_\_ BOXES: 5-1/2" HIGH x 6" WIDE x 15" DEEP

DOORS OF 1/8" THICK EXTRUDED ALUMINUM

NATURAL BRUSHED FINISH

CABINET OF 24 GAUGE GALVANIZED STEEL

DATE:

CLIENT:

ATTN:

PROJECT:

APPROVED BY:



*Mail Boxes*  
 595 St-Rémi Street  
 Montreal, Quebec  
 CANADA - H4C 3G6

Tel: (514) 934-0385  
 Fax: (514) 934-1732

E-Mail: [info@riopel.net](mailto:info@riopel.net)