

**DOOR LOCK:**

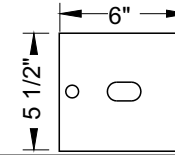
- 5 PIN CYLINDER CAM TYPE WITH 2 KEYS.
- EXTRA KEYS AVAILABLE. 1000 KEY CHANGES TO AVOID DUPLICATION

**DOOR IDENTIFICATION:**

- DOORS HAVE WINDOWS WITH NUMBERS, SOLID WITH ENGRAVED PLASTIC TAB OR ENGRAVING ON DOOR AND CARD HOLDER IN EACH BOX
- NUMBER PLATES SIZE: 2-1/2" X 1-1/8"
- WINDOW SIZE: 1-9/16" x 7/8"

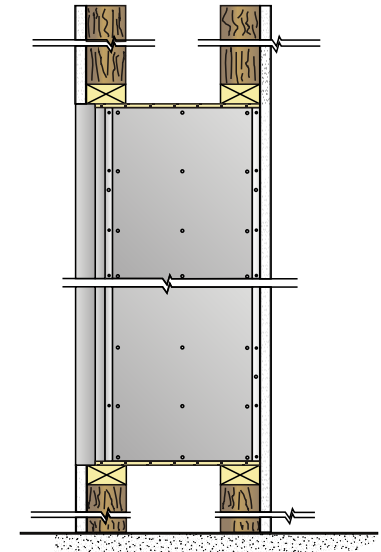
**SPECIFICATIONS:**

- 66" (1676 mm) MAX. FLOOR TO TOP OF BOX
- 18" (457 mm) MIN. FLOOR TO BOTTOM OF BOX
- 15-1/2" (394 mm) WALL DEPTH

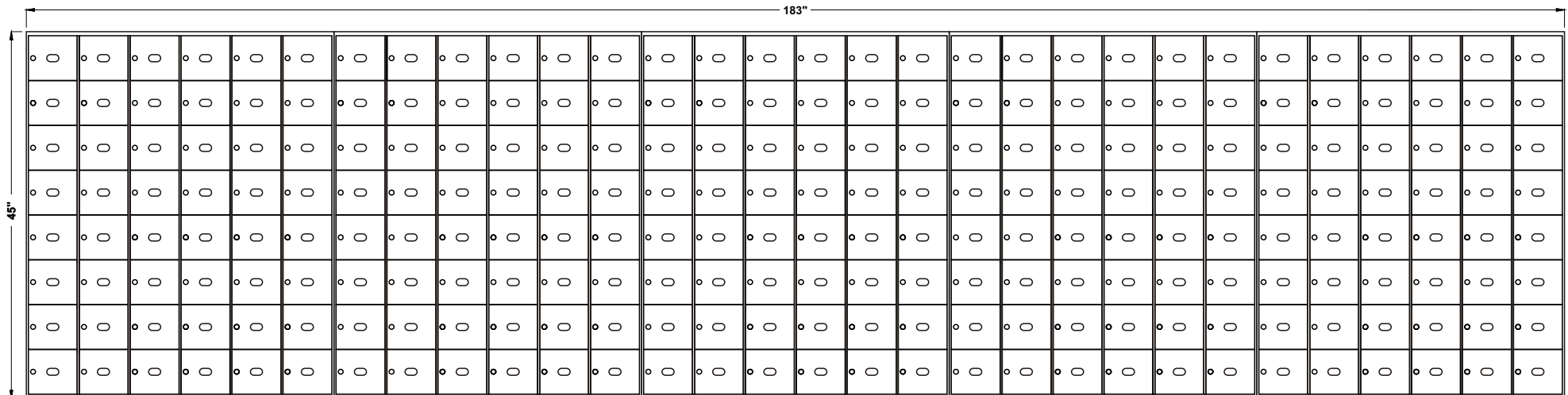


**4500-D240**

ROUGH WALL OPENING SHOWN ON DRAWING WITH 15-1/2" DEPTH



**SIDE VIEW**



**MODEL 4500 REAR LOADING HORIZONTAL MAILBOXES**

5 MODULES: 8 HIGH X 6 LARGE

240 \_\_\_\_\_ BOXES: 5-1/2" HIGH x 6" WIDE x 15" DEEP

DOORS OF 1/8" THICK EXTRUDED ALUMINUM

NATURAL BRUSHED FINISH

CABINET OF 24 GAUGE GALVANIZED STEEL

DATE:

CLIENT:

ATTN:

PROJECT:

APPROVED BY:



*Mail Boxes  
595 St-Rémi Street  
Montreal, Quebec  
CANADA - H4C 3G6*

*Tel: (514) 934-0385  
Fax: (514) 934-1732*

*E-Mail: info@riopel.net*

**UNEQUALLED EXPERTISE IN MAILBOXES + POSTAL SPECIALTIES**

DWG No.

BY: