

DOOR LOCK:

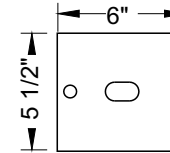
- 5 PIN CYLINDER CAM TYPE WITH 2 KEYS.
- EXTRA KEYS AVAILABLE. 1000 KEY CHANGES TO AVOID DUPLICATION

DOOR IDENTIFICATION:

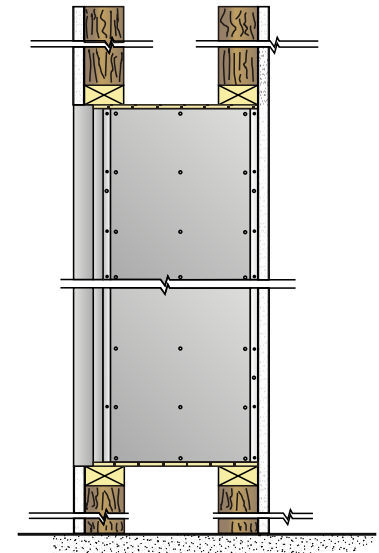
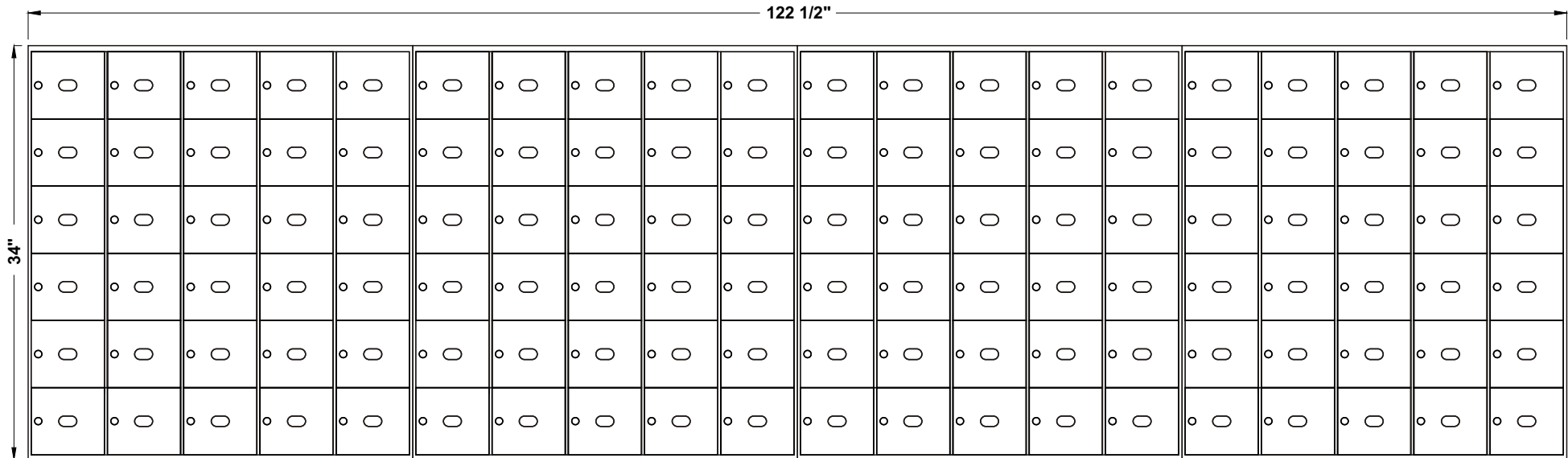
- DOORS HAVE WINDOWS WITH NUMBERS, SOLID WITH ENGRAVED PLASTIC TAB OR ENGRAVING ON DOOR AND CARD HOLDER IN EACH BOX
- NUMBER PLATES SIZE: 2-1/2" X 1-1/8"
- WINDOW SIZE: 1-9/16" x 7/8"

SPECIFICATIONS:

- 66" (1676 mm) MAX. FLOOR TO TOP OF BOX
- 18" (457 mm) MIN. FLOOR TO BOTTOM OF BOX
- 15-1/2" (394 mm) WALL DEPTH

**4500-B120**

ROUGH WALL OPENING SHOWN ON DRAWING WITH 15-1/2" DEPTH

**SIDE VIEW****MODEL 4500 REAR LOADING HORIZONTAL MAILBOXES**

4 MODULES: 6 HIGH X 5 LARGE

120 _____ BOXES: 5-1/2" HIGH x 6" WIDE x 15" DEEP
 DOORS OF 1/8" THICK EXTRUDED ALUMINUM
 NATURAL BRUSHED FINISH
 CABINET OF 24 GAUGE GALVANIZED STEEL

DATE:

CLIENT:

ATTN:

PROJECT:

APPROVED BY:



Mail Boxes
 595 St-Rémi Street
 Montreal, Quebec
 CANADA - H4C 3G6

Tel: (514) 934-0385
 Fax: (514) 934-1732

E-Mail: info@riopel.net**UNEQUALLED EXPERTISE IN MAILBOXES + POSTAL SPECIALTIES**

DWG No.

BY: